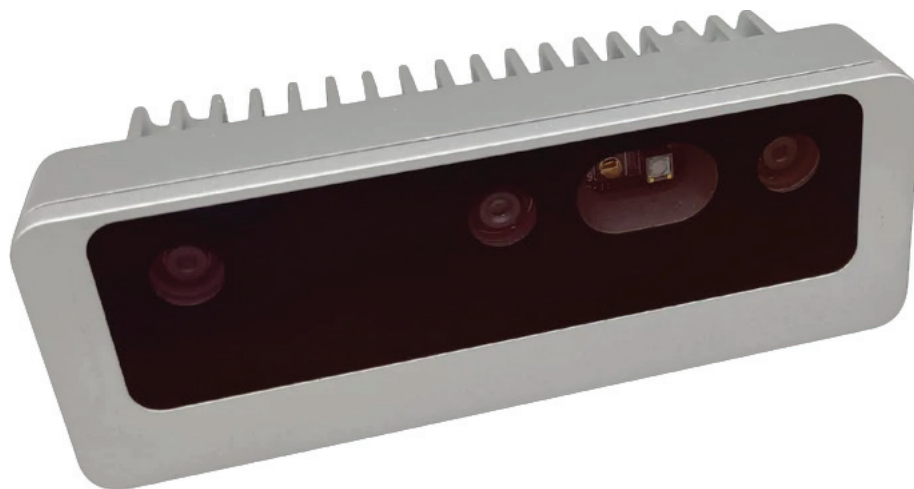


OAK-D Pro PoE



4K Camera

- 12 MPs
- 60 FPS
- RGB Autofocus

9-Axis IMU

- Up to 500 Hz

Depth Perception Distance

- Minimum: 19.6 cm
- Maximum: 38.4 m

Power Consumption

- Maximum: 5 W

Active Stereo & Night Vision

- IR laser dot projector
- IR illumination LED

OpenVINO Compatible

- Use models trained with popular frameworks like TensorFlow, Pytorch, and more.

IP67 Sealed

- M12 X-coded ethernet
- M8 with strobe, sync, UB, and GPIO

1,000,000 Depth Points

- Up to 30 m
- 120 FPS

4 Trillion Operations/Sec

- 16 “mini-GPU” vector processors
- 2 dedicated AI processors
- 1 dedicated 200 FPS disparity depth processor

Size

- Dimensions: 11×4.7×3.1 cm
- Weight: 184 g

